



EconoLodge

537 US Route 1
Freeport, ME 04032
Phone (888) 339-9249
(207) 865-3777
Fax (207) 865-4678

Introduction:

Welcome to the Freeport EconoLodge.

The EconoLodge hotel is conveniently located within a mile of L.L. Bean (open 24 hours), as well as upscale outlet shops, designer boutiques, great restaurants and casual cafes.

The EconoLodge is conveniently located less than four miles from the Desert of Maine, which offers narrated coach tours. The Freeport hotel is minutes from Bradbury Mountain State Park, Winslow State Park, the Harrington House, Maine Maritime Museum and Bowdoin College.

Popham Beach State Park, Reid State Park, and Old Orchard Beach are about 30 minutes away. Portland International Jetport is 18 miles from the hotel.

Guests of this Freeport Hotel will enjoy many amenities, including free expanded continental breakfast, free local calls and free weekday newspapers. All hotels rooms offer free wireless internet. Copy and fax services are offered in the lobby.

All guest rooms include coffee makers, spacious work desks and cable television including HBO. Some rooms have microwaves and refrigerators.

Pet friendly, handicap, and smoking rooms are available.

Whether traveling for business or pleasure, the EconoLodge hotel provides superior accommodations, a convenient location and affordable rates to everyone visiting Freeport. We look forward to seeing you soon.





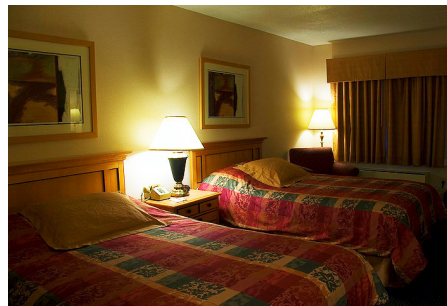
EconoLodge

537 US Route 1
Freeport, ME 04032
Phone (888) 339-9249
(207) 865-3777
Fax (207) 865-4678

Area Information

Area Attractions:

Atlantic Seal Cruises (2.5m/4.0KM E)
Bradbury Mountain State Park (8.5m/13.7km NW)
Camden Hills State Park (75.8m/122.0km NE)
Desert of Maine (3.2m/5.1km NW)
Harrington House (2.3/3.7km N)
Maine Maritime Museum (21.0m/33.8km E)
Mast Landing (3.4m/5.5km NE)
Old Orchard Beach (29.8/47.9km S)
Popham Beach State Park (32.4m/52.1km E)
Reid State Park (33.9m/54.5km E)
Winslow State Park (5.0m/8.0km)
Wolfe's Neck Woods State Park (7.2m/11.6km E)



Area Transportation:

Portland International Jetport (18.0m/29.0km S) – Taxi Available 24 hours a day
Local taxi services 24 hours a day
AMTRAK Train Station (12.0m/19.3km S)
Greyhound Bus Station (12.0m/19.3km S)

Activities & Services:

Boat Rentals
Boating
Driving Range
Fishing
Golf Course
Hiking Nature Areas
Hunting
Movie Theaters
Private Beach
Public Beach
Putting Green





EconoLodge

537 US Route 1

Freeport, ME 04032

Phone (888) 339-9249

(207) 865-3777

Fax (207) 865-4678

Restaurants:

Amato's (American & Italian)

Azure Café (American, Seafood, Italian)

Broad Arrow Tavern (American, Pub Food, Seafood, Vegetarian)

Buck's Naked Barbeque (Steaks & Barbecue)

Corsican Restaurant (American, Seafood, Vegetarian, Mexican)

Freeport Café (Comfort Food & Breakfast)

Gritty McDuff's Brew Pub (Pub Food & Seafood)

Harraseeket Lunch & Lobster (Seafood)

Isabella's Sticky Buns (Breakfast & Pastries)

Jameson Tavern (American & Seafood)

Johnny Rockets (Burgers, Fries & Shakes)

Lobster Cooker (Seafood)

Mediterranean Grill (Turkish, Mediterranean)

Muddy Rudder Restaurant (American & Seafood)

Petrillo's Italian Café (Italian & Pizza)

HOTEL SERVICES & AMENITIES:

Cable & HBO TV

Wi-Fi in every room

Exterior Corridors

Free Expanded Continental Breakfast

Free Local Calls

Free Newspaper (Mon – Fri)

Copy Machine in the lobby

Fax Machine in the lobby

Hair Dryers

In Room AC/Heat

In Room Desk

Outdoor Parking

Coffee Makers

Wake-up Service

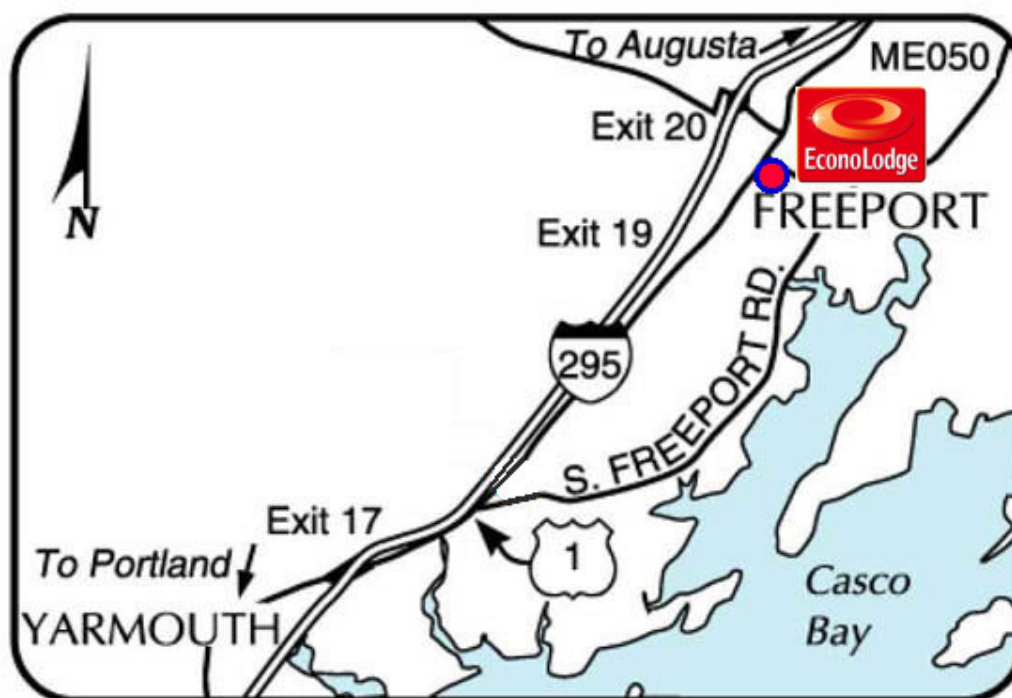




EconoLodge

537 US Route 1
Freeport, ME 04032
Phone (888) 339-9249
(207) 865-3777
Fax (207) 865-4678

Local Map:



Directions to Our Hotel:

From I-295, Exit 20. Follow signs to Route 1 South. Turn right onto US Route 1. Travel 1/4 mile South. Turn left into the hotel. From US Route 1, follow signs (North and South) to Freeport/Freeport Village. Hotel is 1/2 mile South of Freeport Village

